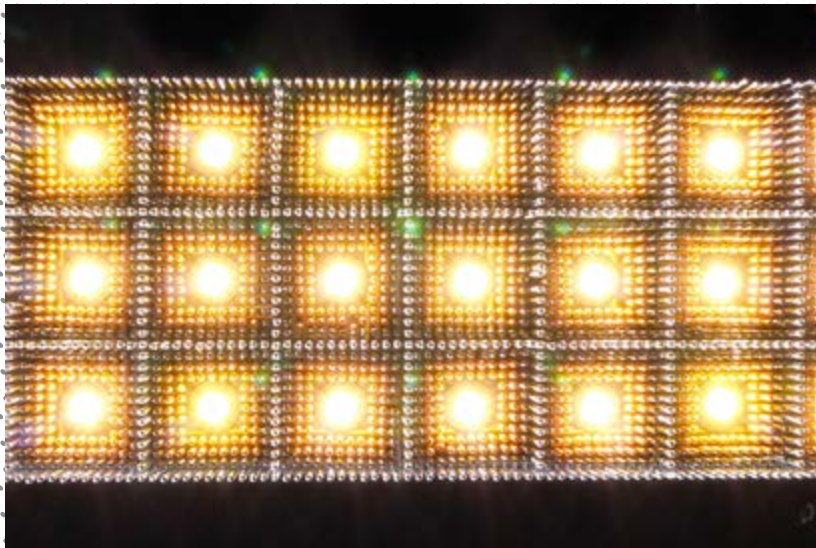


# LINEAL | LINEAL NO.1 - SUSPENDED | LINEAL-NO.1-S



## DESCRIPTION

A modern elongated minimal chandelier with layered geometric square chain pattern. The concept is a textured grid with layers of different coloured metallic chains forming a modular matrix. Illuminated by 45 3W G4 LED's. Perfect for a workspace or office type environment.

## PRODUCT SIZE

SHADE SIZE: 900X180W X 72H MM / TOTAL HEIGHT: 600MM

## PACKAGING DIMENSIONS

1000MM(W) X 300MM(L) X 390MM(H)



## LAMP TYPE & NO

45 X G4-LED 12V 2 WATT LAMPS (90W) LED ONLY

CLASS II  
IP RATING 52  
QC RATING 31

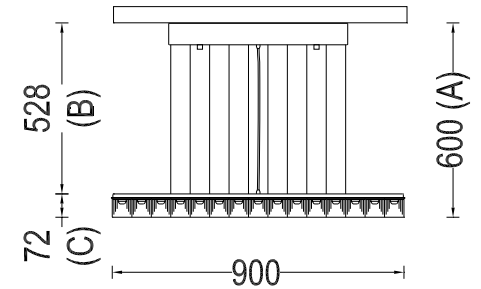
VOLTAGE RANGE  
12 V (110-240V IN)

PRODUCT MARKS & RATINGS



WEIGHT 12KG  
PACKED 20KG  
WEIGHT

## TECHNICAL DRAWING



## INTERACT

### SELECT COLOUR

- SILVER \*
- BRASS \*
- COPPER \*
- SMOKE \*
- MIXED METALIC \*
- RUST \*
- WHITE
- RED
- BLACK

\* METALLIC

### CUSTOMISE DIMENSIONS

A

B

### LAMP TYPE

QUANTITY

### ADDITIONAL COMMENTS

[WEB LINK](#)

[DOWNLOAD](#)