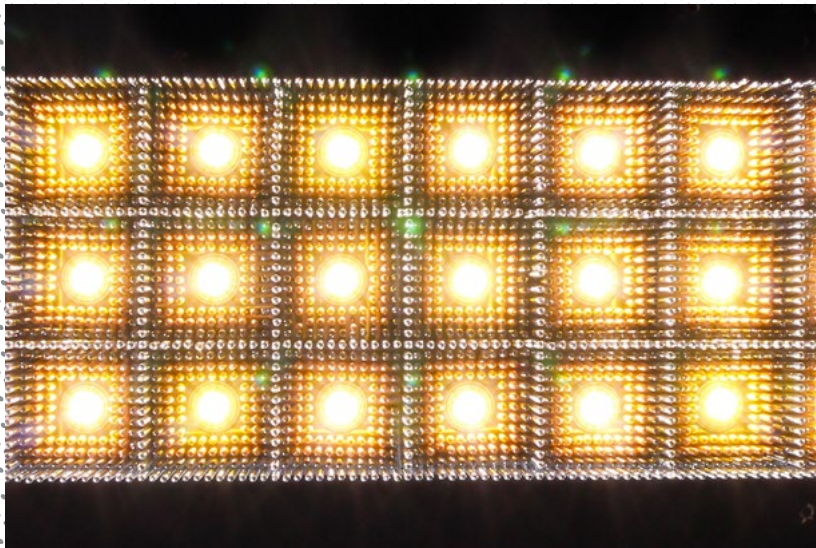


LINEAL | LINEAL NO.1 - SUSPENDED | LINEAL-NO.1-S



DESCRIPTION

A modern minimal pendant lamp with layered geometric square chain pattern. Illuminated by 45 3W G4 LED's. Perfect for a workspace or office type environment.

PRODUCT SIZE

SHADE SIZE: 900X180W X 72H MM / TOTAL HEIGHT: 600MM

PACKAGING DIMENSIONS

460MM(W) X 460MM(L) X 330MM(H)



LAMP TYPE & NO

ELECTRICAL: 45 X G4-LED 12V 3 WATT LAMPS (135W) LED ONLY

CLASS II
IP RATING 52
QC RATING 31

VOLTAGE RANGE
12 V (220V INPUT)

PRODUCT MARKS & RATINGS



WEIGHT 12KG
PACKED 20KG
WEIGHT

INTERACT

SELECT COLOUR

- SILVER *
- BRASS *
- COPPER *
- SMOKE *
- MIXED METALIC *
- RUST *
- WHITE
- RED
- BLACK

* METALLIC

CUSTOMISE DIMENSIONS

A

B

LAMP TYPE

QUANTITY

TECHNICAL DRAWING

